
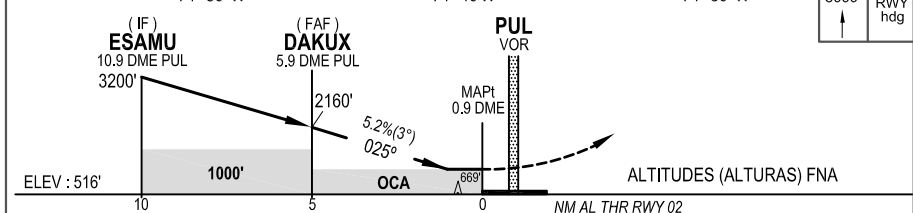
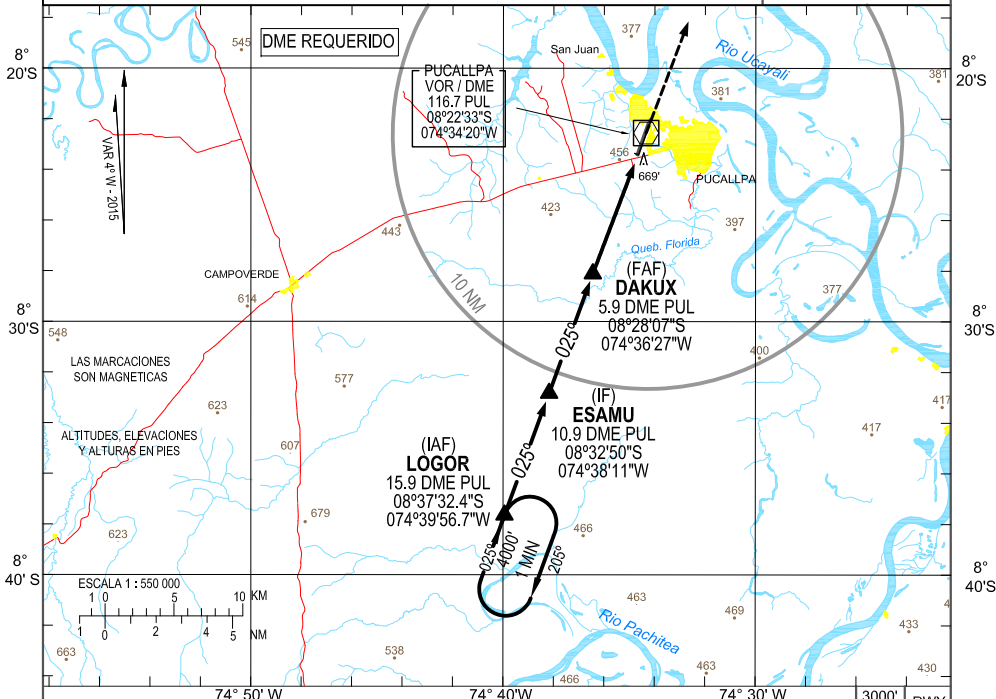
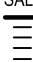
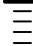


PUCALLPA APP 118.1			PUCALLPA TWR 118.1		MSA 
VOR PUL <b>116.7</b>	Rumbo APCH Final <b>025°</b>	MNM ALT DAKUX <b>2160'</b>	OCA(H) <b>920'</b> (410')	AD Elev. 516' THR Elev <b>516'</b>	
APROX. FRUSTRADA: Ascender en rumbo de pista hasta 3000' y proseguir instrucciones del ATC.					25 NM PUL
Nivel de Transición: Por ATC			Altitud de Transición: 3000'		



Veloci. Terrestre- kts	90	110	130	160	SALS 	DME PUL	5	4	3	2
Angulo desc. 3°-ft/min	480'	585'	690'	850'		PAPI 	ALT	1870'	1550'	1230'

APROX. DIRECTA RWY 02 OCA(OCH): <b>920'</b> (410')				EN CIRCUITO No circular por el Este del AD			
A	1600 m			A	<b>1100'</b> 1600 m		
B	2400 m			B	<b>1200'</b> 3600 m		
C				C			
D				D			